



# CHICAGO YACHT CLUB RACE TO MACKINAC 2025

## SAILING INSTRUCTIONS (SI)

ORGANIZED BY THE CHICAGO YACHT CLUB REGATTA ASSOCIATION (OA)  
HOSTED BY THE CHICAGO YACHT CLUB (CYC)

**FRIDAY 18 JULY 2025**

### CONTACT DETAILS

Race Committee	Coastguard	Race Office
Callsign "CYC Race Committee" VHF Channel 73  Tel: (+1) 312-862-7786  Email: <b>pro@cycracetomackinac.com</b>	"US Coast Guard" (USCG)  VHF Channel 16  (+1) 414-747-7100  Email: LANTWATCH@uscg.mil ninthdistrictcommandcenter@uscg.mil	<b><u>At the start:</u></b> Monroe Station 400 E Monroe St Chicago, IL 60603  <b><u>At the finish:</u></b> Windermere Hotel 7498 Main Street Mackinac Island, MI 49757

**BOATS RETIRING FROM THE RACE SHALL NOTIFY  
THE RACE COMMITTEE (RC) AS SOON AS PRACTICABLE.  
FAILURE TO COMPLY MAY LEAD TO EXCLUSION FROM FUTURE RACES.**

**THE ATTENTION OF EVERY COMPETITOR IS DRAWN TO THE IMPORTANCE OF HAVING SUITABLE AND ADEQUATE  
PERSONAL INSURANCE AND TO RRS FUNDAMENTAL RULE 3:**

**The responsibility for a boat's decision to participate in a race or to continue racing is hers alone.**

**Unless otherwise specifically stated (e.g. by appending EDT/Eastern Daylight Time),  
all times in these SI are CDT (Central Daylight Time).  
CDT shall be used for all racing-related times such as reporting finish times in the self-declarations.**

**All times are stated in 24-hour (military) format (e.g. 15:00 instead of 3pm).**

*The notations '[DP]', '[NP]' and '[SP]' apply as defined in the Notice of Race.*

## **1 RULES**

- 1.1 The regatta will be governed by the rules as defined in The Racing Rules of Sailing (RRS).
- 1.2 Rules defined in the Notice of Race (NoR) are not repeated in the SI.
- 1.3 The US Sailing Federation's prescription to RRS 63.1(b) shall not apply.
- 1.4 RRS 60.4(a)(2) is changed as follows: "(2) if it alleges a breach of a rule of Part 2 or rule 31 and is from a boat that was not involved in, and did not see, the incident, or"

## **2 CODE OF CONDUCT**

- 2.1 Competitors and support personnel shall comply with reasonable requests from race officials.
- 2.2 Advertising provided by the OA shall be placed with care and seamanship in accordance with the instructions provided, and without interfering with its functionality.

## **3 SAFETY**

- 3.1 A CMSR-compliant reflective sailboard, clearly displaying the sail number, shall be displayed aft of the beam on a boat's port side:
  - 3.1.1 to aid identification especially in Search & Rescue operations, at any time the sails are down while racing, and
  - 3.1.2 a minimum of 1.5 nautical miles from the finish line, until the boat has finished.
- 3.2 In addition to the Chicago Mackinac Safety Requirements (CMSR), a Personal Floatation Device shall be worn by each member of the crew while on deck:
  - from sunset to sunrise,
  - when 2 or fewer crew are on deck,
  - and at all other times unless the Person-in-Charge (PIC) instructs that they may be removed.
- 3.3 Boats retiring from the race shall without undue delay inform the RC including the reason for retiring and the intended destination either through the Electronic Finish Declaration, or through text message or call to the RC. See Contact details on the front page.
- 3.4 In case of inadvertent deployment of any safety or rescue equipment that cannot immediately be recovered, or inadvertent activation of any boat or personal rescue signaling devices such as EPIRB, PLB or SART, a boat shall make its best endeavors to inform the US Coast Guard (USCG) via VHF Channel 16, or through the telephone, and log the GPS coordinates and the USCG acknowledgement or response.
- 3.5 In a distress or urgency situation, communication with USCG takes priority. Once able, competitors should attempt to inform RC.

## **4 NOTICES TO COMPETITORS & CHANGES TO THE SI**

- 4.1 Changes to these SI, and all notices to competitors will be posted on the Official Notice Board (ONB), accessible through the Entry System at [www.cycracetomackinac.com](http://www.cycracetomackinac.com).
- 4.2 Any amendment to the Sailing Instructions will be posted no later than 07:00 on the day it takes effect.
- 4.3 As required by NoR 15.4, the ONB will also contain either the Race Committee's (RC) chosen predefined ORC course matrix, or the required documentation if ORC's Weather Routing Scoring (WRS) is being used.

## **5 [DP] EQUIPMENT AND MEASUREMENT CHECKS**

- 5.1 A boat or equipment may be inspected at any time for compliance with the Rules. A boat shall be and remain in compliance from the time it leaves the dock for the purpose of starting the race until it has completed docking after finishing. Additional restrictions apply to boats selected for post-race inspection; see Appendix D2.

## **6 SIGNALS MADE ASHORE**

- 6.1 Signals ashore will be displayed on the flagpole at Chicago Yacht Club's Monroe Station.
- 6.2 When Flag 'AP' is displayed ashore, '1 minute' is replaced by 'no less than 90 minutes' in RRS Race Signals 'AP'. This changes Race Signals 'AP'.
- 6.3 [NP] Signaled information may additionally be broadcast on VHF Channel 73.

## 7 [DP] [NP] COMMUNICATIONS

### At the Start

- 7.1 **VHF Ch.73** - The RC may broadcast information at the start. Boats are strongly recommended to **listen** to the RC until well clear of the start. Start information such as sail numbers and/or boat names of boats having been OCS and subject to the penalty in NoR 1.5 may be announced after each start.

A boat may request and receive repetition of information broadcast by the RC or enquire whether or not a broadcast has been made as per NoR 13.2.

### At the Finish

- 7.2 **VHF Ch.73** - The RC may broadcast information at the finish. Boats are strongly recommended to **listen** to the Race Committee until clear of the finish area and **shall respond** if requested to aid identification.

### At all other times

- 7.3 **VHF Ch.16** - Boats are reminded of their legal obligation to keep a continuous watch on VHF Ch.16 throughout the race.
- 7.4 Competitors are reminded of the restrictions on Outside Assistance in NoR 13.3.

## 8 [DP] [NP] STARTING GROUPS/CLASS FLAGS

- 8.1 No later than the Skipper's Briefing, competing boats will be assigned to starting groups. The list of starting groups and the associated racing pennants/class flags will be published on the ONB. The racing pennants will be provided by the OA and shall be displayed a minimum of 1.5 meters above deck height on the backstay, or on boats with twin backstays, on the PORT backstay or shroud.
- 8.2 An overview of scheduled classes and their start times is provided in Appendix B.

## 9 PRE-START CHECK-IN

- 9.1 The Pre-Start Check-In procedures are mandatory for all competitors. Detailed instructions are set out in Appendix A.

## 10 STARTING TIMES AND SIGNALS

- 10.1 The race will be started by using RRS 26, with the warning signal being made 10 minutes before the starting signal.
- 10.2 For the Cruising Division only, the first warning signal will be displayed on Friday, 18<sup>th</sup> July at 14:50.
- 10.3 For all other divisions, the first warning signal will be displayed on Saturday, 19<sup>th</sup> July at 10:50.
- 10.4 The warning signal for each succeeding class will be made with or after the starting signal of the preceding class.
- 10.5 A time check will be provided 10 minutes before the first warning signal using VHF.
- 10.6 A list of starting groups and their planned starting times and associated signals will be made available with the list of starting groups in SI 8.1.
- 10.7 The Race Committee reserves the right to amend starting times for classes when necessary, e.g. due to weather conditions or safety concerns. Only the visual signals at the start line are binding and conclusive as per RRS 26.
- 10.8 International Code Flag "G" (Golf) displayed on or before the warning signal means: Mark No. 1 "Skyline" (inflatable mark) is not in place and Mark No. 2 becomes the first mark of the course.
- 10.9 RRS 34 is changed by adding: "Should the Race Committee be unable to reset or replace a mark undoubtedly out of position, or a mark missing, competitors shall use their best endeavors to leave the mark's GPS coordinates on the required side."
- 10.10 Competitors are reminded that World Sailing Test Rule DR21-01 applies. See NoR 1.5.

## 11 STARTING LINE

- 11.1 The Starting Line is detailed in Appendix C3.

## 12 [DP] LATE AT THE START

- 12.1 If a boat has not previously come to the starting area at its preparatory signal and comes to the starting area under power as permitted by SI 16.1 (or being towed), it shall stop its engine (or drop the tow). Provided that no advantage has been gained, no penalty will be imposed.

## 13 AREAS THAT ARE OBSTRUCTIONS

- 13.1 No area is designated an obstruction.

## 14 THE COURSE

- 14.1 The course is detailed in Appendix C4.

## **15 RETIREMENTS AND NON-STARTERS**

- 15.1 Retirements and non-starters shall promptly inform the RC (see page 1 for contact details). It is imperative that boats that are no longer competing can be excluded from any Search & Rescue operation. **Failure to comply with this rule may lead to exclusion from future races.**

## **16 [DP] USE OF ENGINE / TEMPORARY DISCONTINUANCE OF RACING**

The following are permitted as per RRS 42.3(i), provided that the boat does not gain an advantage in the race. All relevant details shall be noted and reported on the Declaration Form:

- 16.1 A boat may use its engine for propulsion in exceptional circumstances, e.g. to avoid a collision, in a grave emergency, or when instructed by governing authorities such as the coast guard, VTS or harbor master, or as permitted by SI 12.1.
- 16.2 A boat may make fast in order to take shelter or in an emergency. It shall, on rejoining the race, return to the spot where it began to use the engine, turn off its engine and continue to race from that spot. This changes RRS 45 and 48.2.
- 16.3 A boat that is secured in harbor may receive any assistance to effect repairs, or take on supplies or equipment. This changes RRS 41 and 48.1.

## **17 MECHANICAL POWER**

- 17.1 The use of an Autopilot is limited to the Double-Handed and Cruising Monohull Category, see NoR 5.4.3 / 5.5.1.
- 17.2 [DP] The use of powered winches is permitted if rated, see the rules in the ORC rating system or OD rules.

## **18 TIME LIMIT**

- 18.1 The Race Time Limit is 12:00 on Thursday following the start of the race.
- 18.2 Boats starting but failing to sail the course before the Race Time Limit, and not subsequently retiring, penalized or given redress, will be scored Time Limit Expired (TLE) without a hearing. A boat scored TLE shall be scored points for the finishing place one more than the finishing place of the last boat that sailed the course within the Race Time Limit and was not penalized under RRS 30.3 or 30.4. This changes RRS 35, A5.1, A5.2 and A10.

## **19 THE FINISH**

- 19.1 The Finish is detailed in Appendix C5.

## **20 RACE FINISH DECLARATIONS AND RETURN OF YB TRACKER**

- 20.1 Each boat shall record its own finishing time and, if identifiable, the names or sail numbers of the boats finishing ahead of and behind it. As soon as practicable after finishing, but no later than its protest time limit (NoR 16.6), this information shall be transmitted to the RC through the electronic Race Finish Declaration.
- 20.2 When, after finishing the race, a boat cannot promptly complete the Declaration, she shall without delay telephone the RC to confirm that she has finished racing and provide the finish time.
- 20.3 Further procedures that shall be adhered to after finishing, from clearing post-race inspections to docking instructions, are detailed in Appendix D. It also describes ways to return the YB tracking device, which depend on the docking location or the use of the Touch & Go procedure.
- 20.4 In exceptional circumstances when a boat is unable to return its tracker, the PIC shall request, via email to [regattamanager@cycracetomackinac.com](mailto:regattamanager@cycracetomackinac.com), alternate return instructions and be responsible for returning it in accordance with them. Failure to return the unit will be charged in accordance with NoR 14.4 and may result in the exclusion from future races.

## **21 PENALTY SYSTEM / HEARING REQUESTS**

- 21.1 The penalty system and hearing requests are described in NoR 16.
- 21.2 Notices will be posted no later than 30 minutes after the protest time limit (NoR 16.6) for the last boat to finish the race.
- 21.3 Hearings will normally be held at the Windermere Hotel on Mackinac Island, from 09:00 EDT on Monday and Tuesday following the start of the race. The Protest Committee may specify other arrangements.

## **22 SCORING**

- 22.1 The Scoring System as defined in NoR 15, will apply.
- 22.2 Once the RC has decided and published the applicable scoring system as per NoR 15.4, the published TCF of boats shall not be changed.
- 22.3 If the RC has published the use of WRS as per NoR 15.4 but exceptional circumstances (e.g. technical issues, ORC WRS/prediction system outages) prevent the timely calculation of WRS-based TCFs, the RC may instead apply one of the USA's custom scoring options. This decision, the reason for it, and the list of TCFs shall be published on the ONB within the time frame defined in NoR 15.4.
- 22.4 Scores within classes shall be calculated using the time of crossing the applicable finish line in C6.1 or C6.10 for that class. Should the Alternative Finish Line in C6.10 be in force for any class containing boats scored in overall results, the applicable overall results shall be calculated from the Alternative Finish Line times for all classes that form part of those overall results.

## **23 OFFICIAL VESSELS**

- 23.1 Official vessels will be identified by displaying flags showing the Round Island Lighthouse, Press Flag, Code Flag W (Whiskey), or a blue flag with the RC insignia.

## **24 TROPHIES AND PRIZES**

- 24.1 Trophies and Prizes are detailed in the Notice of Race 17.

## **25 RISK STATEMENT**

- 25.1 Competitor's attention is drawn to NoR 19 "RISK & LIABILITY / PRIVACY POLICY, MEDIA RIGHTS & CONSENT".

## **26 PRIZEGIVING**

- 26.1 Flags for winners will be presented in the open lawn area between Mission Point Resort and the Mackinac Straits between 14:00 EDT – 18:00 EDT on Tuesday following the start unless posted differently on the ONB.
- 26.2 If for any reason a representative of a winner will not be available at the presentation to receive the flag, the PIC is requested to so notify the CYC Regatta Manager by email to [regattamanager@cycracetomackinac.com](mailto:regattamanager@cycracetomackinac.com).
- 26.3 Unless otherwise notified, CYC Race to Mackinac trophies will be awarded at the Annual Mackinac Awards Dinner on Saturday, November 1, 2025 at Monroe Station.

## APPENDIX A CHECK-IN PROCEDURES

### A1 CHECK-IN FOR THE CRUISING CATEGORY ONLY

A1.1 Boats in the **Cruising Division** shall proceed to within hailing distance of the RC Boat located at the west end of the starting line (the Race Committee Boat located closest to the Chicago Harbor Breakwater),

- leave the RC Boat to port while displaying its CMSR-compliant reflective sailboard (SI 3.1) on its port side, and
- gain acknowledgement by the RC. Check-In via VHF Radio is not permitted.

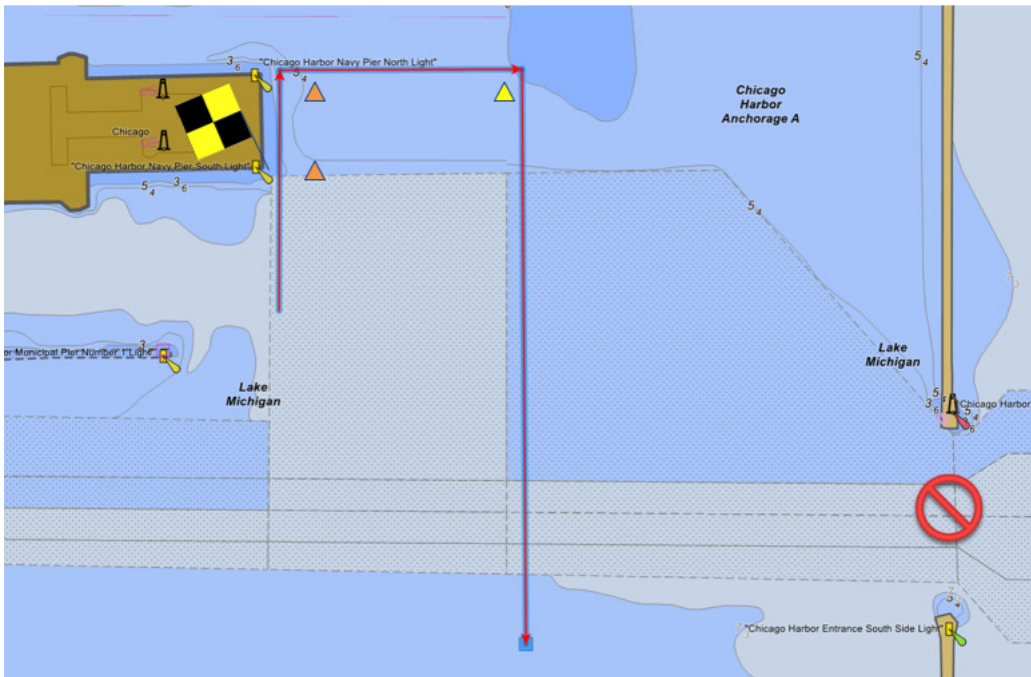
### A2 CHECK-IN FOR ALL OTHER CATEGORIES OF RACE

A2.1 The Race Committee will be on station for Check-In displaying code flag “Lima” from the end of Navy Pier between 09:30 and 13:00. Check-In via VHF Radio is not permitted; the procedure below must be followed.

A2.2 Prior to entering the starting area, each boat shall:

- Proceed under power from South to North along the east end of Navy Pier,
- leave the two orange buoys, located approximately 50 meters off the end of Navy Pier, to starboard while displaying its CMSR-compliant reflective sailboard (SI 3.1) on its port side forward of the mast, and
- gain acknowledgement by the RC.

A2.3 After being acknowledged and having left the two orange buoys to starboard, boats shall proceed to the starting area by travelling east, outside the yellow buoy, then in a southerly direction along the West side of the Chicago Breakwater. Boats shall not pass through the gap between the Chicago Harbor Light (2025 LL #19960)<sup>1</sup> and Chicago Harbor Entrance South Side Light (2025 LL #19985).



<sup>1</sup> LL refers to “Light List Volume VII”, available from [https://www.navcen.uscg.gov/sites/default/files/pdf/lightLists/LightList\\_V7\\_2025.pdf](https://www.navcen.uscg.gov/sites/default/files/pdf/lightLists/LightList_V7_2025.pdf)

## APPENDIX B STARTING GROUPS / CLASSES

Please find below the list of scheduled start times and associated class flags (pennants). No later than the Skipper's Briefing for each Division, a list of boats with their assigned starting class and pennant will be made available on the ONB (SI 8.1).

\* Competitors are reminded that only visual signals are binding. Changes to the schedule may be required (see SI 10.7).

Slot No.	Division	Class	Pennant	Start Day	Scheduled Time *
1	Cruising	Cruising 3	Aqua	Friday	15:00
2	Cruising	Cruising 2	Yellow	Friday	15:10
3	Cruising	Cruising 1	Violet	Friday	15:20
4	Trophy	Class 10	Green	Saturday	11:00
5	Trophy	T10	Pink	Saturday	11:10
6	Trophy	Class 9	Blue	Saturday	11:20
7	Trophy	Ben 36.7	Aqua	Saturday	11:30
8	Trophy	Double Handed	Yellow	Saturday	11:40
9	Trophy	J105	Violet	Saturday	11:50
10	Trophy	Class 8	Green	Saturday	12:00
11	Trophy	J109 & Level 35	Pink	Saturday	12:10
12	Trophy	Class 7	Blue	Saturday	12:20
13	Cup	Ben 40.7	Aqua	Saturday	12:30
14	Cup	Class 6	Yellow	Saturday	12:40
15	Cup	Class 5	Violet	Saturday	12:50
16	Cup	J111	Green	Saturday	13:00
17	Cup	Class 4	Pink	Saturday	13:10
18	Cup	Class 3	Blue	Saturday	13:20
19	Cup	Class 2	Aqua	Saturday	13:30
20	Cup	Class 1	Yellow	Saturday	13:40
21	Cup	GL 52	Violet	Saturday	13:50
22	Multihull	Multihull 1 & 2	Green	Saturday	14:00
GR	General Recall Slots; first possible starting signal #			Saturday	14:10

# Recalled Classes will be restarted in the same order as originally scheduled

## APPENDIX C THE COURSE

### C1 START SAFETY ZONES/AREAS TO AVOID PRE-START

- C1.1 A pre-start safety area will be established. Two green inflatable buoys will be laid approximately 0.2 nm South of the starting line. The line connecting these buoys, and their imaginary extensions to the East and West, defines the northern boundary of the pre-start safety area.
- C1.2 Boats whose warning signal has not been displayed shall keep clear of the starting area by proceeding in the most direct fashion to, and thereafter remain South of, the pre-start boundary.
- C1.3 Particular care shall be taken while maneuvering from the Check-In to the pre-start safety area during a preceding group's start sequence, where boats may still be liable to infringe RRS 23.1.

### C2 [NP] VHF RADIO INFORMATION

- C2.1 As a courtesy, the RC may make radio broadcasts on VHF Channel 73 regarding the timing of signals displayed and other information relevant to the start. Flag signals remain the only binding information.
- C2.2 The RC may attempt to hail boats identified as OCS using their sail number or boat names. Failure to do so, or failure to hear such hail, or the order in which boats are hailed shall not be grounds for a request for redress. This changes RRS 61.1(a).

### C3 STARTING LINE

- C3.1 The RC Signal Boat, flying an orange flag bearing a depiction of the Round Island Lighthouse, will be located approximately 0.75 nm East of Chicago Harbor Outer Breakwater South End Light (2025 LL #19980).
- C3.2 The Starting Line will be between a staff displaying an orange flag on the RC Signal Boat at the starboard (eastern) end, and a staff displaying an orange flag on the RC Pin-End boat at the port (western) end of the line.
- C3.3 The line will remain open for a minimum of five minutes after the later of the last scheduled start or restart(s).

### C4 THE COURSE

- C4.1 The course, including a description of the marks, the order in which marks are to be passed, and the side on which each mark is to be left, is detailed below:

Order	Mark <sup>2*</sup>	Required Side	Position (WGS84) <sup>#</sup>	
			Latitude	Longitude
1 <sup>§</sup>	Mark 1 "Skyline" <sup>§</sup> (yellow inflatable cylinder), approximately 0.6 nm ESE Montrose Breakwater Light)	Starboard	41° 58'.13N	087° 37'.05W
2	Pass between Grays Reef Light (2025 LL #17775) and Grays Reef Passage Channel Lighted Buoy 7 (2025 LL #17780) <b>or</b> pass West of Beaver Island	Gate  <b>or</b> Starboard	45° 45'.94N 45° 45'.74N	085° 09'.23W 085° 08'.49W
3	New Shoal Lighted Bell Buoy 3 (2025 LL #17745)	Starboard	45° 48'.89N	085° 08'.01W
4	Mackinac Bridge pass under one of the three center spans	Pass		
5	South Graham Shoal Buoy 2A (2025 LL #12635)	Port	45° 49'.53N	084° 42'.34W
	Finish (see SI C5 below)			

**Distance: approximately 289nm**

<sup>§</sup> If IC Flag G is displayed at or before the warning signal, Mark 1 "Skyline" is not in place, and Mark No. 2 becomes the first mark of the course. (See SI 10.8)

<sup>#</sup> The position of marks is approximate. The format is degrees° minutes'.decimal minutes.

<sup>2</sup> LL refers to Light List Volume VII, available from [https://www.navcen.uscg.gov/sites/default/files/pdf/lightLists/LightList\\_V7\\_2025.pdf](https://www.navcen.uscg.gov/sites/default/files/pdf/lightLists/LightList_V7_2025.pdf)

## C5 GENERAL RECALL PROCEDURE

C5.1 RRS Race Signals, and RRS 29.2, second sentence are changed as follows:

The First Substitute will be removed without a sound one minute prior to the preparatory signal for any succeeding class. The first warning signal for any recalled class(es) will be given with the starting signal of the last scheduled class to start and be sequenced in the same order of classes as they were recalled.

## C6 THE FINISH

- C6.1 Unless the Alternative Finish Line is in use as per SI C6.9 below, the finish line is between the southwest corner of the Round Island Lighthouse (2025 LL <sup>3</sup>#12585, approx. 45° 50'.20N 084° 37'.00W) and a blue flag on a staff at the Race Committee finish trailer on Mackinac Island.
- C6.2 No later than 1.5 nm from the finish, boats shall display CMSR compliant reflective sailboards, see SI 3.1.
- C6.3 No later than passing Mackinac Bridge, boats shall establish a **listening** watch on VHF 73, see SI 7.2.
- C6.4 Boats finishing the race shall note their finishing time and declare it as soon as practicable, see SI 20.
- C6.5 After finishing, boats shall follow the procedures laid out in Appendix D - Docking & inspection Procedures after Finishing.
- C6.6 Boats finishing after 08:00 on the Wednesday following the start need not adhere to C6.2, C6.3 or Appendix D. Instead, they shall make docking arrangements directly with the Michigan DNR Mackinac Island Harbormaster if planning to make landfall on Mackinac Island. The RC may no longer be on station after that time.
- C6.7 To approximate the north end of the finishing line, two vertical green lights, a colored inflatable mark on top of the finish-trailer, and/or a flashing strobe may be displayed night and day from the trailer.
- C6.8 Two high-intensity searchlights used by the Race Committee to identify boats and sail numbers may be flashed on and off. They are positioned to the west of the finish line and have no significance for the finishing boat. These lights are not to be considered as a signal, either to the location of the finish line or that any boat has finished.
- C6.9 The Race Committee may use an Alternative Finish Line under specific conditions laid out below. If in use, the finish line is the meridian of longitude 084° 50.00' W.
- C6.10 The Alternative Finish Line may be activated by the RC under the following circumstances:
- for a specific class, provided that IC Flag "F" (Foxtrott) is displayed no later than the Warning Signal for that class
  - for all boats in one or more divisions, as applicable, if circumstances arise making it manifestly unsafe, unfair, or impractical to use the normal finish line. This may include, but is not limited to, closure of the Mackinac Bridge, severe weather, or governmental direction. The RC will attempt to inform boats through Email, Text Message and on VHF Ch. 73 as early as practicable. No visual signal will be provided.
- Overall results that include the affected classes would then be scored differently, see SI 22.4.

---

<sup>3</sup> \* LL refers to Light List Volume VII, available from [https://www.navcen.uscg.gov/sites/default/files/pdf/lightLists/LightList\\_V7\\_2025.pdf](https://www.navcen.uscg.gov/sites/default/files/pdf/lightLists/LightList_V7_2025.pdf)

## APPENDIX D DOCKING & INSPECTION PROCEDURES AFTER FINISHING

### D1 ACTIONS AFTER FINISHING

- D1.1 After finishing, boats may be subject to inspection as per SI 5 [DP] Equipment and Measurement Checks. Boats shall establish contact with “Docking Control” on VHF Channel 78 and follow the instructions provided. Boats selected for post-race inspections will be notified as described in D2 and are subject to the limitations therein until they have been released.
- D1.2 As soon as practicable, boats shall submit their declaration, see SI 20.
- D1.3 Boats shall race with sufficient and appropriately sized dock lines, spring lines and fenders appropriate for rafting with up to 10 other boats. Boats unable to comply with this regulation may be required by Docking Control to depart from all CYCMC-controlled docking locations.
- D1.4 Failure to comply with any of the docking and inspection rules renders a boat liable to protest and may result in exclusion from future races.

### D2 POST-RACE INSPECTIONS

- D2.1 Boats selected for post-race inspection shall be notified by “Docking Control”, the TC or RC. The primary method is a VHF hail clearly informing the boat that it has been selected for inspection and providing instructions. The boat shall acknowledge receipt of this hail. If radio contact cannot be established, a representative of the RC or TC will notify the boat in person at its docking location.
- D2.2 A boat thus notified shall not make landfall except as instructed, discharge any crew, or remove or take on board any item until expressly released by the inspector.

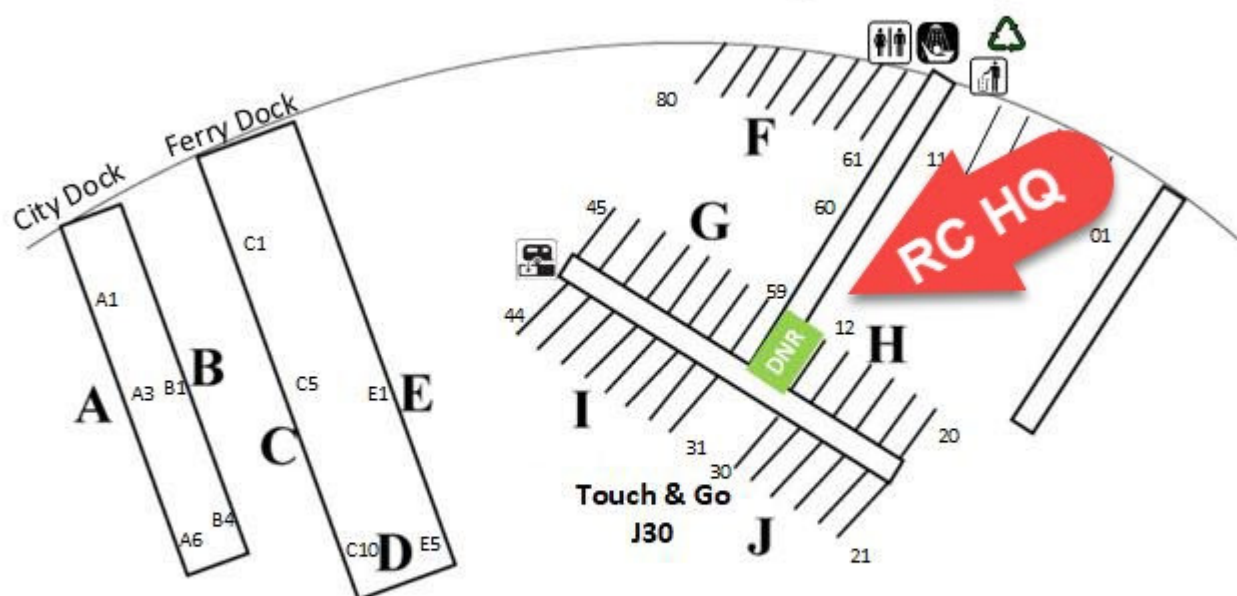
### D3 DOCKING / TOUCH & GO PROCEDURES

- D3.1 General Conditions for Docking after the race in addition to the rules laid out in NoR 9:
- Unless a boat has previously secured arrangements for continued berthing at their own cost, all boats **shall leave their assigned location no later than 11:00 EDT the Wednesday** after the start.
  - Boats rafted, or otherwise possibly blocking another boat, shall have on board a crew capable of moving the boat from 08:00 EDT the Wednesday after the start to facilitate a timely departure by all boats.
  - Unless specifically directed otherwise by Docking Control, anchoring is not allowed in Mackinac Island State Harbor.
  - All docked vessels shall comply with Clean Marina policies including:
    - o No fueling from portable containers
    - o Full or empty fuel containers are not allowed on the docks
    - o No engine repairs
    - o If washing topside, only environmentally friendly cleaners that are phosphate free and non-toxic may be used. Cleaners that contain ammonia, lye, sodium hypochlorite, chlorine, or petroleum distillates are prohibited.
    - o Any other policy or rule of the applicable marina, or as laid out per location in D3.3 below.

#### D3.2 Touch & Go

For boats not docking on Mackinac Island, or if directed to use this procedure by Docking Control, the boat shall proceed to the Touch & Go Slip, normally located at Slip J30 in Mackinac Island State Harbor. It shall return its tracker to Docking Control and depart without undue delay. No loitering is permitted.

## 2025 Mackinac Island Docking Zone Map



**DO NOT DOCK IN ANY ZONE UNTIL GIVEN PERMISSION TO DO SO BY  
DOCKING CONTROL ON VHF CH 72**

## Mackinac Island

Boats shall proceed to the docking zone or location as directed by Docking Control. Electrical services will usually not be available to rafted vessels and are not allowed to rafted boats in Mackinac Island State Harbor (MISH). The use of generators is not allowed in MISH. The drying of sails on fencing near the roadway is prohibited. To prevent the potential for electroshock drowning, swimming is not allowed in MISH.

**Mackinaw City/St. Ignace** (St. Ignace Municipal Marina & Straits State Harbor)

Boats assigned to Mackinaw City docking shall comply with the Touch & Go Procedure in D3.2 before promptly leaving towards their assigned docking location. Boats shall contact the appropriate harbor master prior to arrival to confirm the assignment.

Electrical services will usually not be available to rafted vessels and are not allowed to rafted boats in Straits State Harbor (SSH). The use of Generators is not allowed in SSH.

To prevent the potential for electroshock drowning, swimming is not allowed in SSH.

## INFORMATION TO COMPETITORS (NOT PART OF THE RULES)

### ONLINE RESOURCES FOR COMPETITORS



Notice Board



Hearings/Protest Board



Frequently Asked Questions (FAQ)



YB Tracker



YB Links & Leaderboards  
(Text, Expedition, Adrena, etc)



Schedule of Events



Scratchbook App (IOS)



Scratchbook App (Android)



Join Competitor WhatsApp group

## SOCIAL MEDIA HASHTAG

To take part in the story of the Race on Social Media, please add the race's hashtag **#cycrtm**.